

MTC Quantitative control system

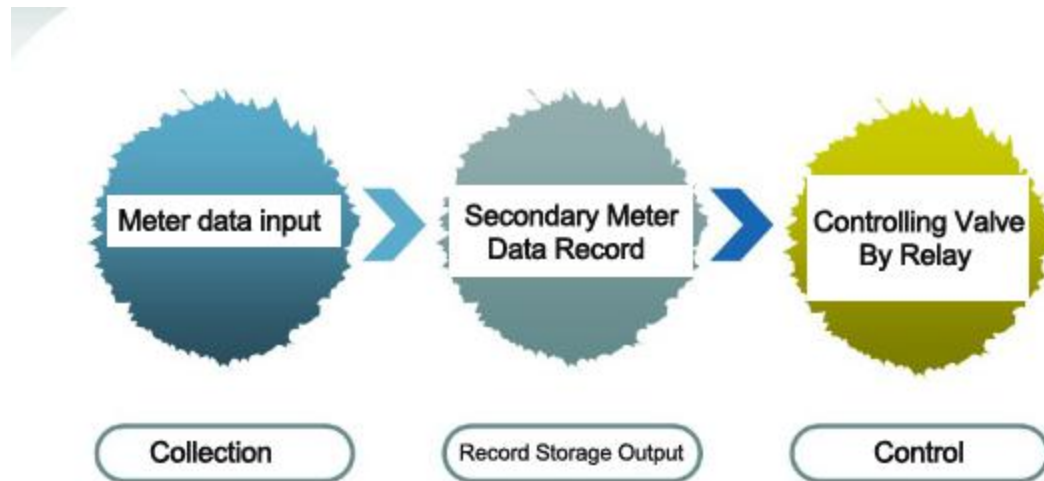
MTC Quantitative control system function: By our system could realize the liquid output of quantitative. (For example quantitative 1000L, liquid exit valve close)

1.A.Flow meter,it is the most important part of the whole system,will influence the control result. More accurate more better and need to have the output function.Please choose the most suitable for the working condition.

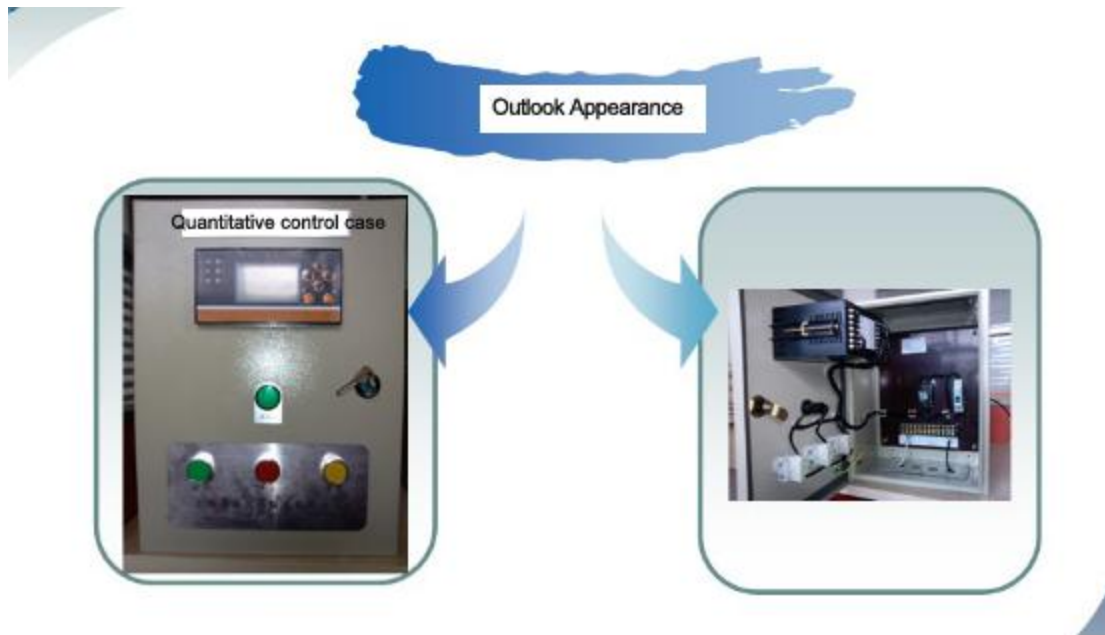
B.Quantitative control system box,the outside size is 400*300*200mm.

C.Power equipment. It could control the pump or electro valve,etc.

2、MTC Quantitative control system simple principle here:

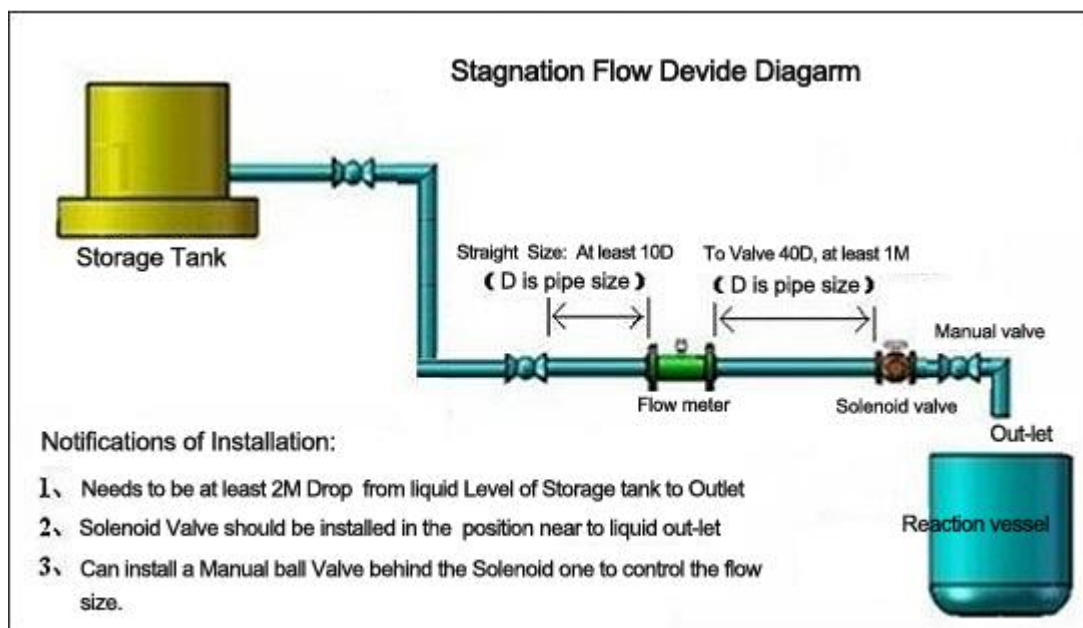


3、MTC Quantitative control system appearance picture:



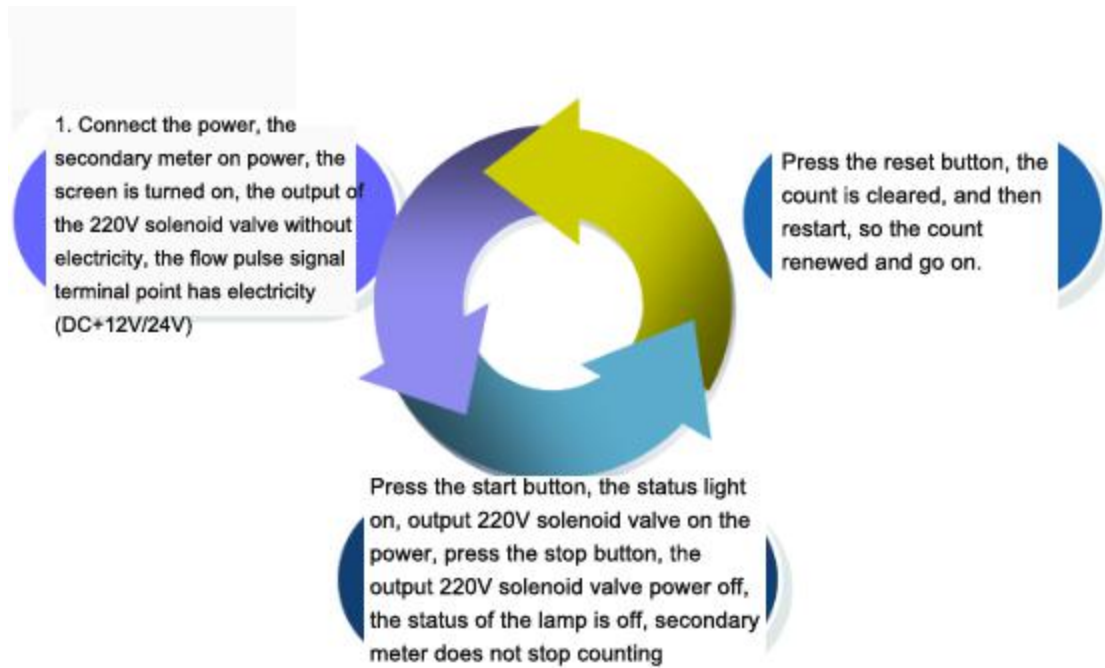
4、 Information about the scene

Liquid fill to the reaction vessel, after the liquid exit the set value , like 300L, the exit stop outflow, simple scene as following:



Reminder: Quantitative control system box can be installed on the user's convenience location which is easy to control and operate. So at the above picture did not show the control system box. Each control system could only operate one storage tank.

5、 Instructions



6、Parameter of equipment:

Sensor	Quantitative control system	Magnetic valve
Function: data collection Medium: water Temp: room temperature Pressure: 20kpa Pipe: DN50 Material: Stainless steel Flow rate: 1~10m ³ /h Power: 24V DC Connection: clamp Output: Pulse Accuracy: 0.5 grade	Function: record, store, output power: 220V AC output: pulse output: 4~20mA	Function: start and stop Power: 220V AC Pipe: DN50 Material: Stainless steel connection: clamp